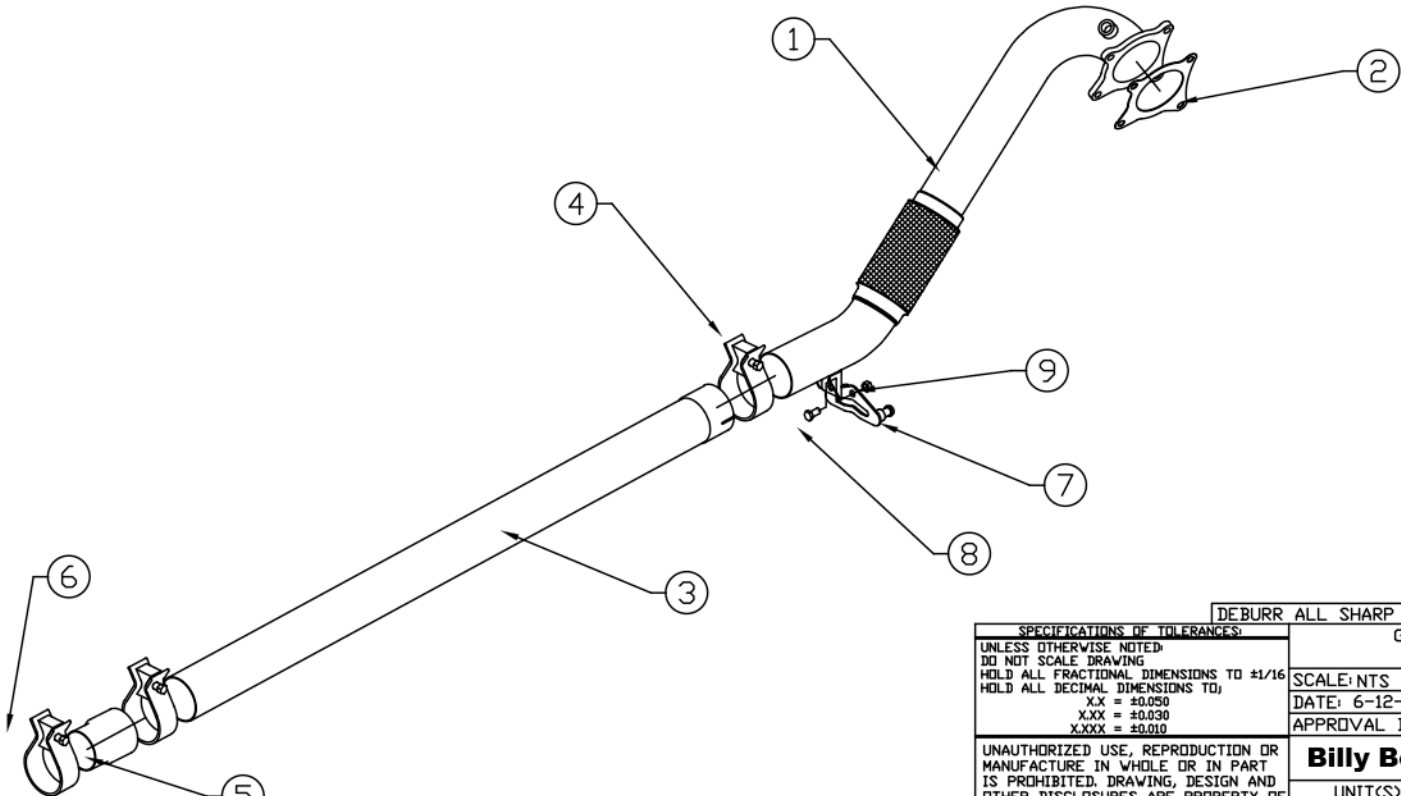


BILL OF MATERIALS					
ITEM	QTY.	U/M	PACKING	ISP INT	DESCRIPTION
1	1	EA			DOWNPIPE SECTION
2	1	EA			GASKET- 3" 4-BOLT
3	1	EA			PIPE SECTION
4	2	EA			CLAMP- 3" BAND
5	1	EA			ADAPTOR 2 3/8" TO 3" I.D.
6	1	EA			CLAMP- 2 1/4" BAND SPECIAL
7	1	EA			LOWER HANGER
8	1	EA			BOLT 3/8-16 x 3/4
9	1	EA			NUT 3/8-16 STOVER LOCK



SPECIFICATIONS OF TOLERANCES:		DEBURR ALL SHARP EDGES		REV.	DATE	E.C.N. NO.	BY
UNLESS OTHERWISE NOTED: DO NOT SCALE DRAWING HOLD ALL FRACTIONAL DIMENSIONS TO ±1/16 HOLD ALL DECIMAL DIMENSIONS TO:		GOLF R 3" CATLESS DOWNPIPE					
XX = ±0.050		SCALE: NTS		DWN: AWL			
XXX = ±0.030		DATE: 6-12-18		SHT: 1 OF 1			
XXXX = ±0.010		APPROVAL DATE:		APPROVED BY:			
UNAUTHORIZED USE, REPRODUCTION OR MANUFACTURE IN WHOLE OR IN PART IS PROHIBITED. DRAWING, DESIGN AND OTHER DISCLOSURES ARE PROPERTY OF		Billy Boat Performance Exhaust					
		UNIT(S) INCH		JOB NUMBER:		DRAWING NO. FPIM0479	