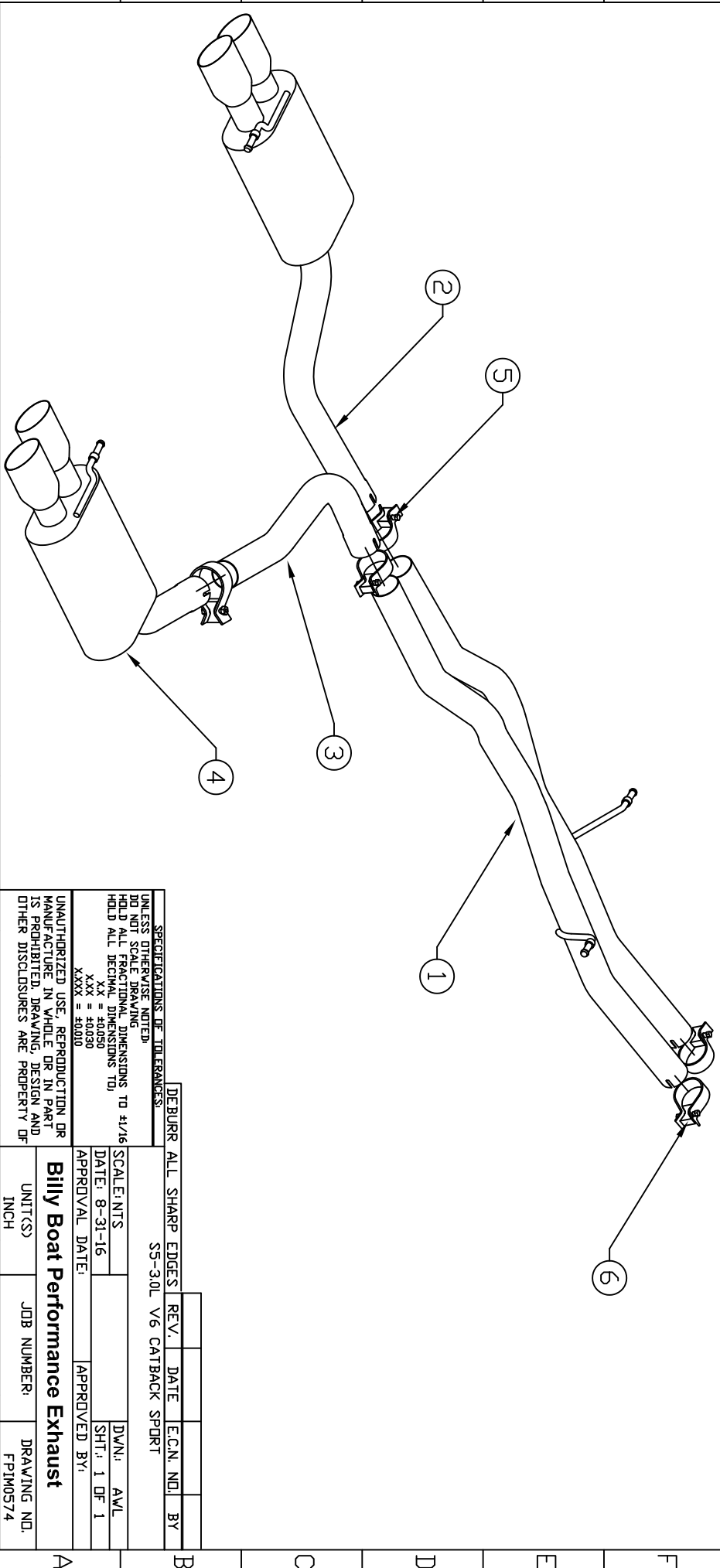


BILL OF MATERIALS

ITEM	QTY.	U/M	PACKING	ISP	INT	DESCRIPTION
1	1	EA				CENTER X-PIPE SECTION
2	1	EA				DRIVER SIDE MUFFLER SECTION
3	1	EA				PASSENGER SIDE MUFFLER INLET PIPE
4	1	EA				PASSENGER SIDE MUFFLER SECTION
5	3	EA				CLAMP-2 1/2" BAND
6	2	EA				"CLAMP-SPECIAL"
7						
8						



SPECIFICATIONS OF TOLERANCES:

UNLESS OTHERWISE NOTED:
 DO NOT SCALE DRAWING
 HOLD ALL FRACTIONAL DIMENSIONS TO /16
 HOLD ALL DECIMAL DIMENSIONS TO /100
 X.X = ±0.050
 X.XX = ±0.020
 X.XXX = ±0.010

UNAUTHORIZED USE, REPRODUCTION OR
 MANUFACTURE IN WHOLE OR IN PART
 IS PROHIBITED. DRAWING, DESIGN AND
 OTHER DISCLOSURES ARE PROPERTY OF

DEBURR ALL SHARP EDGES! REV. DATE E.C.N. NO. BY

SS-30L V6 CATBACK SPORT

SCALE: INTS DATE: 8-31-16 DWN: AVL

APPROVAL DATE: APPROVED BY: SHT: 1 OF 1

Billy Boat Performance Exhaust

UNIT(S) INCH JOB NUMBER: DRAWING NO. FPI0574