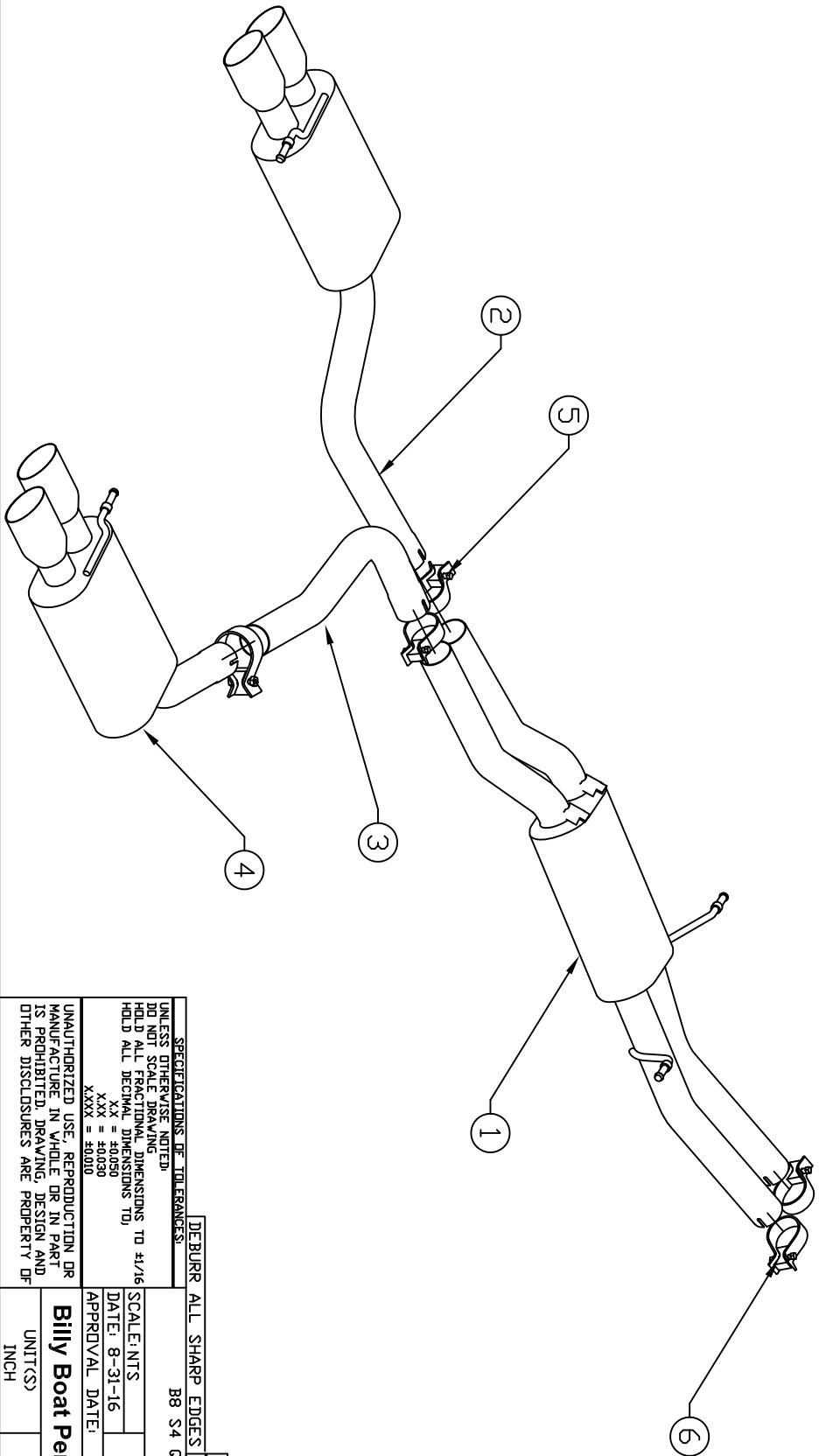


BILL OF MATERIALS

ITEM	QTY.	U/M	PACKING	ISP	INT	DESCRIPTION
1	1	EA				CENTER MUFFLER SECTION
2	1	EA				DRIVER SIDE MUFFLER SECTION
3	1	EA				PASSENGER SIDE MUFFLER INLET PIPE
4	1	EA				PASSENGER SIDE MUFFLER SECTION
5	3	EA				CLAMP-2 1/2" BAND
6	2	EA				"CLAMP-SPECIAL"
7						
8						



SPECIFICATIONS OF TOLERANCES:

UNLESS OTHERWISE NOTED:
 DO NOT SCALE DRAWING
 HOLD ALL FRACTIONAL DIMENSIONS TO J16
 HOLD ALL DECIMAL DIMENSIONS TO J16
 X.X = ±0.050
 X.XX = ±0.030
 X.XXX = ±0.010

UNAUTHORIZED USE, REPRODUCTION OR
 MANUFACTURE IN WHOLE OR IN PART
 IS PROHIBITED. DRAWING, DESIGN AND
 OTHER DISCLOSURES ARE PROPERTY OF

DEBURR ALL SHARP EDGES | REV. | DATE | ECN. NO. | BY

B8 S4 QUATTRO 3.0L STEALTH

SCALE: INTS | DATE: 8-31-16 | DWN.: AVL

APPROVAL DATE: | APPROVED BY: | SHT.: 1 OF 1

Billy Boat Performance Exhaust

UNIT(S) | JOB NUMBER: | DRAWING NO. FPI0545

A B C D E F G H

10 9 8 7 6 5 4 3 2 1

A B C D E F G H