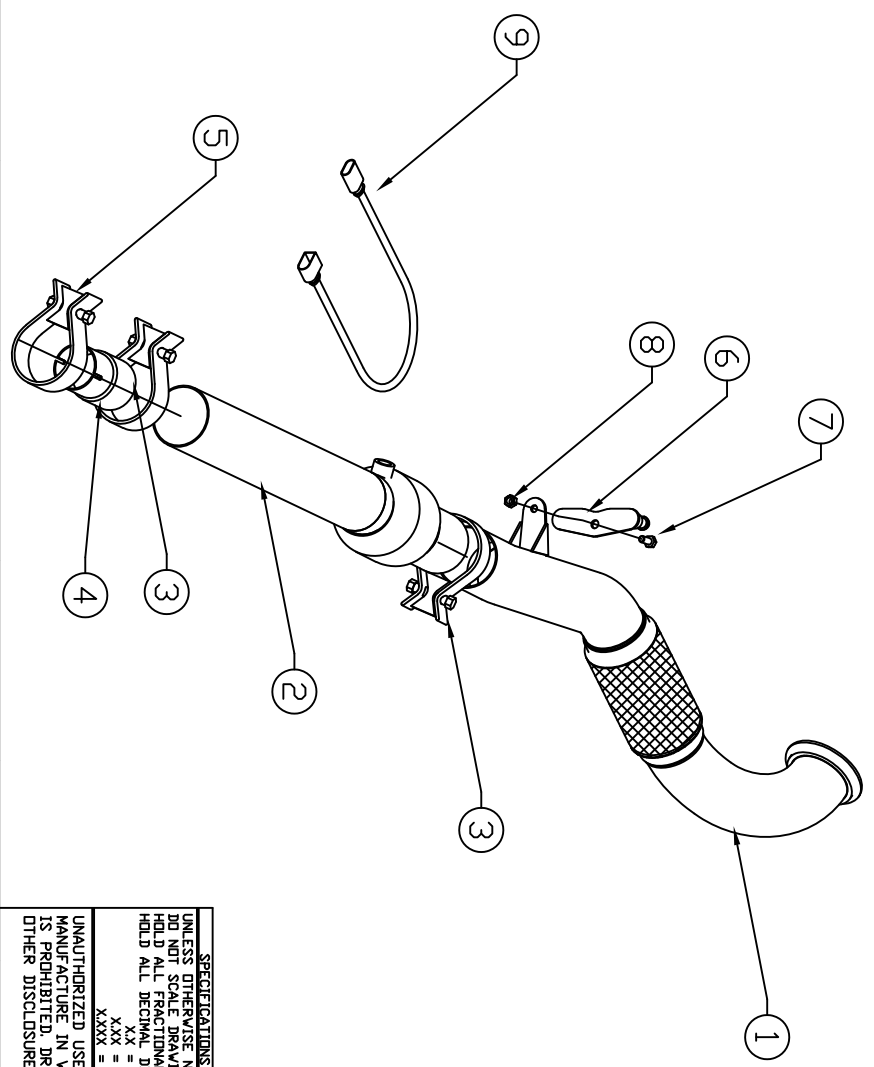


BILL OF MATERIALS

ITEM	QTY.	U/M	PACKING	ISP	INT	DESCRIPTION
1	1	EA				DOWNPIPE SECTION
2	1	EA				CAT SECTION
3	2	EA				CLAMP - 3" BAND
4	1	EA				ADAPTOR
5	1	EA				CLAMP - SPECIAL
6	1	EA				HANGER
7	1	EA				BOLT 3/8-16 x 3/4
8	1	EA				NUT 3/8-16 STOVER LOCK
9	1	EA				D2 EXTENSION WIRE



SPECIFICATIONS OF TOLERANCES:

UNLESS OTHERWISE NOTED:
 DO NOT SCALE DRAWING
 HOLD ALL FRACTIONAL DIMENSIONS TO ±1/16
 HOLD ALL DECIMAL DIMENSIONS TO:
 .XX = ±0.050
 .XXX = ±0.030
 .XXXX = ±0.010

UNAUTHORIZED USE, REPRODUCTION OR
 MANUFACTURE IN WHOLE OR IN PART
 IS PROHIBITED. DRAWING, DESIGN AND
 OTHER DISCLOSURES ARE PROPERTY OF

DEBURR ALL SHARP EDGES | REV. | DATE | ECN. NO. | BY

MK7 DOWNPIPE 15- (MOB)

SCALE: INTS
 DATE: 8-23-16
 APPROVAL DATE: | APPROVED BY: | DWN.: AVL
 SHT.: 1 OF 1

Billy Boat Performance Exhaust

UNIT(S) INCH | JOB NUMBER: | DRAWING NO. FPIM0490