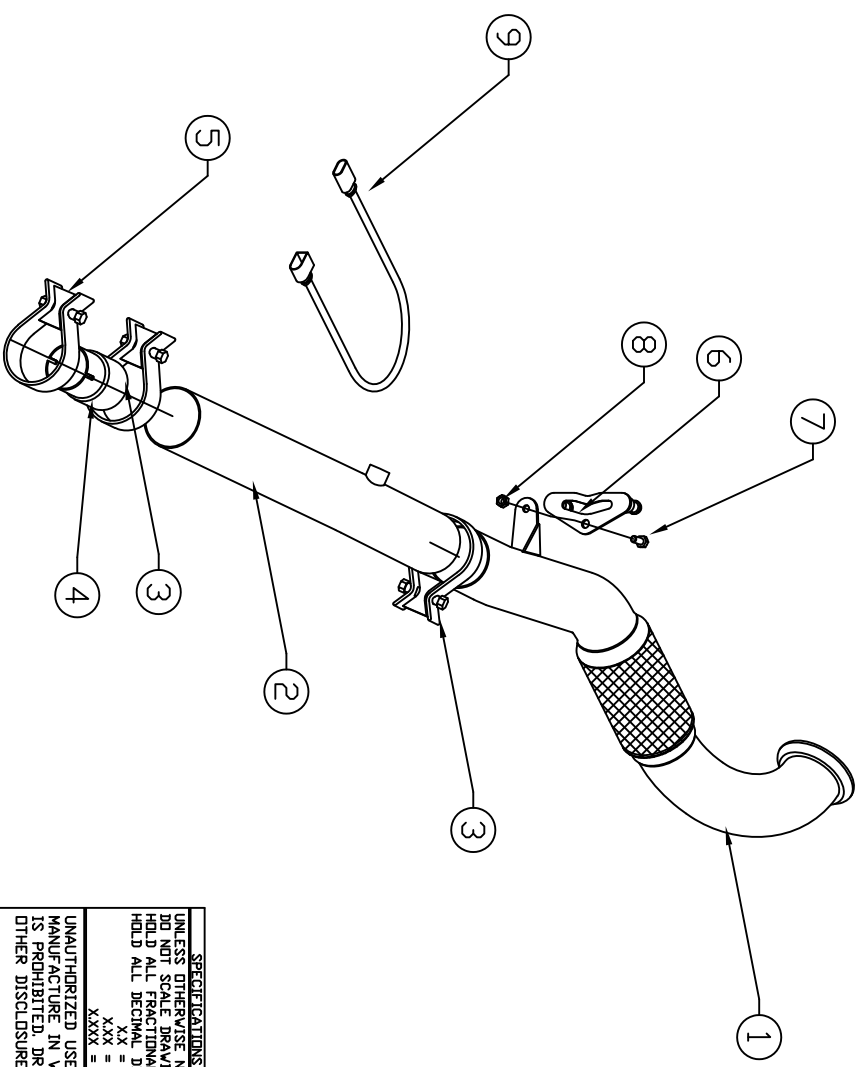


ITEM	QTY.	U/M	PACKING	ISP	INT	DESCRIPTION
1	1	EA				DOWNPIPE SECTION
2	1	EA				PIPE SECTION
3	2	EA				CLAMP - 3" BAND
4	1	EA				ADAPTOR
5	1	EA				CLAMP - SPECIAL
6	1	EA				HANGER
7	1	EA				BOLT 3/8-16 x 3/4
8	1	EA				NUT 3/8-16 STOVER LOCK
9	1	EA				D2 EXTENSION WIRE

BILL OF MATERIALS



**SPECIFICATIONS OF TOLERANCES:**  
 UNLESS OTHERWISE NOTED:  
 DO NOT SCALE DRAWING  
 HOLD ALL FRACTIONAL DIMENSIONS TO ±1/16  
 HOLD ALL DECIMAL DIMENSIONS TO:  
 .XX = ±0.050  
 .XXX = ±0.030  
 .XXXX = ±0.010

DEBURR ALL SHARP EDGES | REV. | DATE | ECN. NO. | BY

A3 QUATTRO DOWNPIPE 2015-  
 W/D CAT

SCALE: INTS  
 DATE: 8-30-16  
 APPROVAL DATE: | APPROVED BY: |  
 DWN. | AVL  
 SHT.: 1 OF 1

**Billy Boat Performance Exhaust**  
 UNITS(S) | JOB NUMBER: | DRAWING NO.  
 INCH | | FPIM0464

