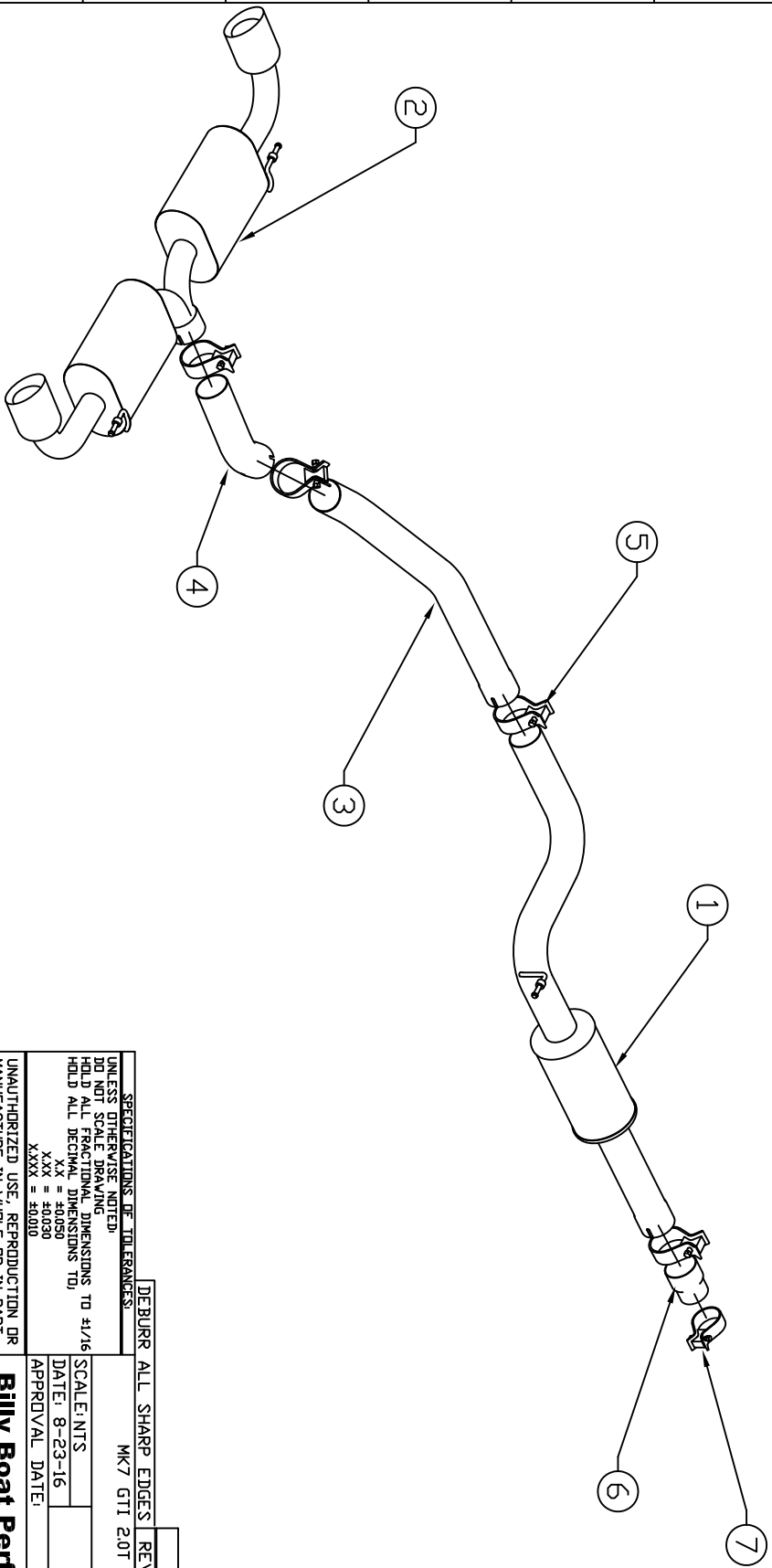


BILL OF MATERIALS

ITEM	QTY.	U/M	PACKING	ISP	INT	DESCRIPTION
1	1	EA				RESONATOR SECTION
2	1	EA				REAR MUFFLER SECTION
3	1	EA				CENTER PIPE SECTION
4	1	EA				MUFFLER INLET PIPE
5	4	EA				CLAMP - 2" BAND
6	1	EA				ADAPTOR 3" x 2 3/8"
7	1	EA				CLAMP - 2 1/2" BAND
8						



SPECIFICATIONS OF TOLERANCES:

UNLESS OTHERWISE NOTED:
 DO NOT SCALE DRAWING
 HOLD ALL FRACTIONAL DIMENSIONS TO $\pm 1/16$
 HOLD ALL DECIMAL DIMENSIONS TO $\pm .0050$
 X.X = ± 0.050
 X.XXX = ± 0.0010

UNAUTHORIZED USE, REPRODUCTION OR
 MANUFACTURE IN WHOLE OR IN PART
 IS PROHIBITED. DRAWING, DESIGN AND
 OTHER DISCLOSURES ARE PROPERTY OF

DEBURR ALL SHARP EDGES	REV.	DATE	ECN. NO.	BY
MK7 GTI 2.0T CATBACK 15- (KQB)				

SCALE: INTS	DATE: 8-23-16	DWN: AVL
APPROVAL DATE:		SHT: 1 OF 1
	APPROVED BY:	

Billy Boat Performance Exhaust	JOB NUMBER:	DRAWING NO.
UNIT(S) INCH		FP1M0370