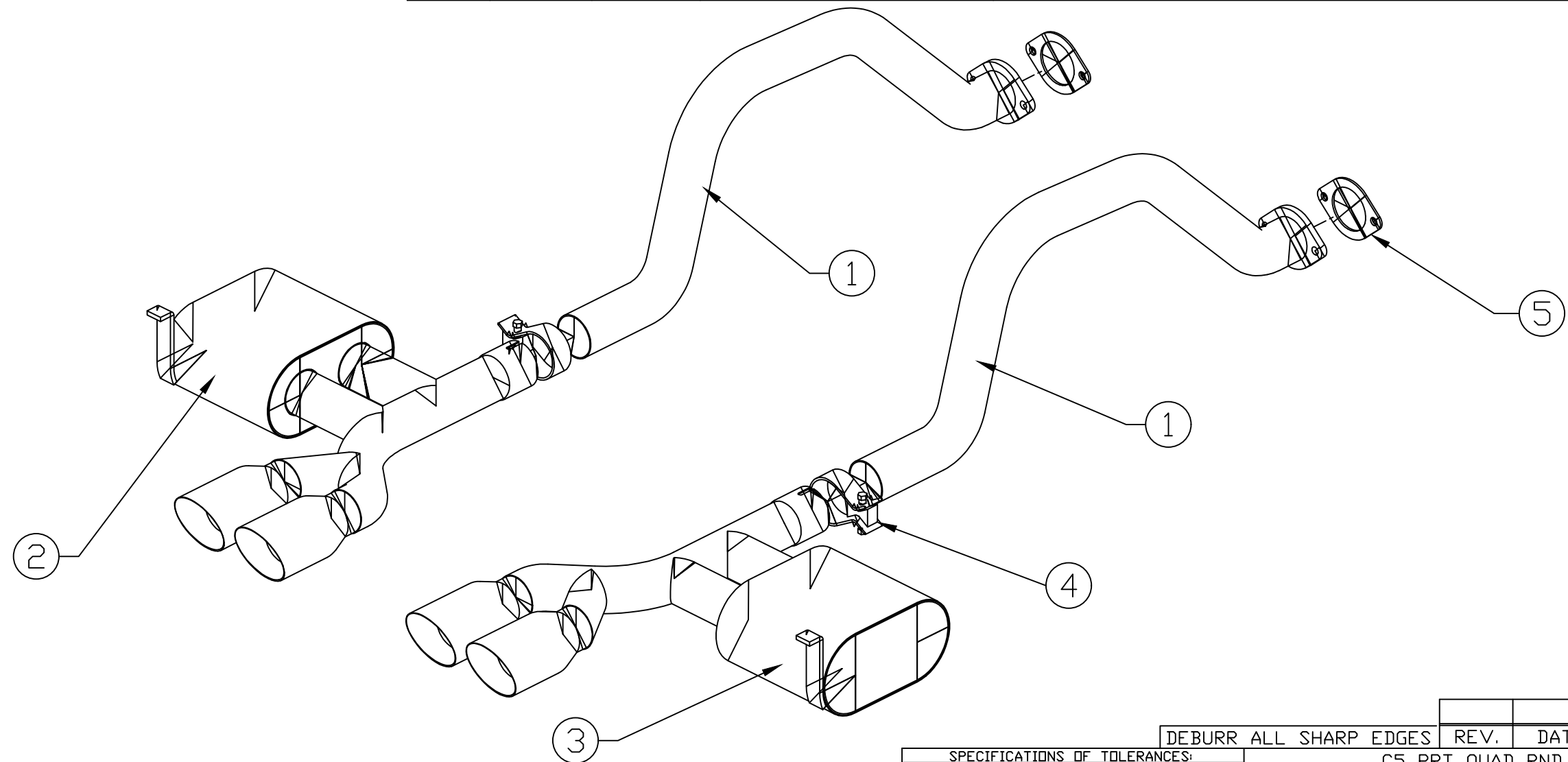


10 9 8 7 6 5 4 3 2 1

BILL OF MATERIALS

| ITEM | QTY. | U/M | PACKING | ISP | INT | DESCRIPTION |
|------|------|-----|---------|-----|-----|--------------------------------|
| 1 | 2 | EA | | | | REAR AXLE HOOP |
| 2 | 1 | EA | | | | DRIVER SIDE MUFFLER SECTION |
| 3 | 1 | EA | | | | PASSENGER SIDE MUFFLER SECTION |
| 4 | 2 | EA | | | | CLAMP- 2.50" BAND |
| 5 | 2 | EA | | | | GASKET- 2.50" 2-BOLT |
| 6 | | | | | | |
| 7 | | | | | | |
| 8 | | | | | | |



| | | | | |
|------------------------|------|------|------------|----|
| DEBURR ALL SHARP EDGES | REV. | DATE | E.C.N. NO. | BY |
|------------------------|------|------|------------|----|

SPECIFICATIONS OF TOLERANCES:
 UNLESS OTHERWISE NOTED:
 DO NOT SCALE DRAWING
 HOLD ALL FRACTIONAL DIMENSIONS TO $\pm 1/16$
 HOLD ALL DECIMAL DIMENSIONS TO:
 X.X = ± 0.050
 X.XX = ± 0.030
 X.XXX = ± 0.010

| | | |
|-------------------------|--------------|--|
| C5 PRT QUAD RND '97-'03 | | |
| SCALE: NTS | DWN: AWL | |
| DATE: 9-05-03 | SHT: 1 OF 1 | |
| APPROVAL DATE: | APPROVED BY: | |

UNAUTHORIZED USE, REPRODUCTION OR MANUFACTURE IN WHOLE OR IN PART IS PROHIBITED. DRAWING, DESIGN AND OTHER DISCLOSURES ARE PROPERTY OF BILLY BOAT PERFORMANCE EXHAUST

| | | |
|---------------------------------------|-------------|-------------------------|
| Billy Boat Performance Exhaust | | |
| UNIT(S) INCH | JOB NUMBER: | DRAWING NO. FCOR0215 |

10 9 8 7 6 5 4 3 2 1