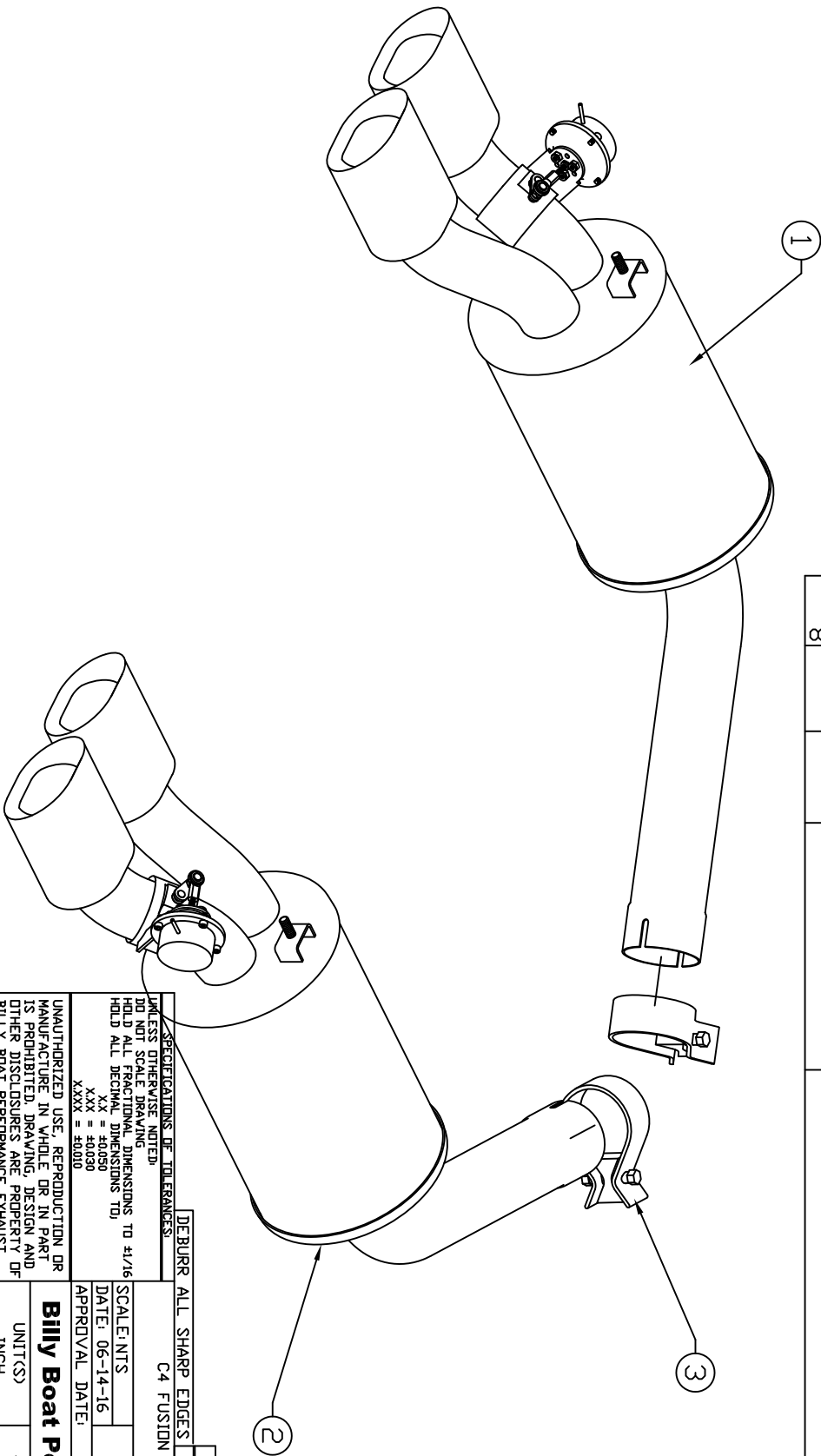


BILL OF MATERIALS

ITEM	QTY.	U/M	PACKING	ISP	INT	DESCRIPTION
1	1	EA				DRIVER SIDE MUFFLER SECTION
2	1	EA				PASSENGER SIDE MUFFLER SECTION
3	2	EA				CLAMP-3.00" BAND
4						
5						
6						
7						
8						



SPECIFICATIONS OF TOLERANCES:
 UNLESS OTHERWISE NOTED:
 DO NOT SCALE DRAWING
 HOLD ALL FRACTIONAL DIMENSIONS TO /16
 HOLD ALL DECIMAL DIMENSIONS TO:
 .XX = ±0.050
 .XXX = ±0.010
 .XXXX = ±0.0010

DEBURR ALL SHARP EDGES | REV. | DATE | ECN. NO. | BY

C4 FUSION REAR MUFFLERS W/KIT

SCALE: INCHES
 DATE: 06-14-16
 APPROVAL DATE: | APPROVED BY: | DWN: | AVL

UNAUTHORIZED USE, REPRODUCTION OR MANUFACTURE IN WHOLE OR IN PART IS PROHIBITED. DRAWING, DESIGN AND OTHER DISCLOSURES ARE PROPERTY OF BILLY BOAT PERFORMANCE EXHAUST

Billy Boat Performance Exhaust

UNIT(S) | JOB NUMBER | DRAWING NO.
 INCH | | FCDR0045