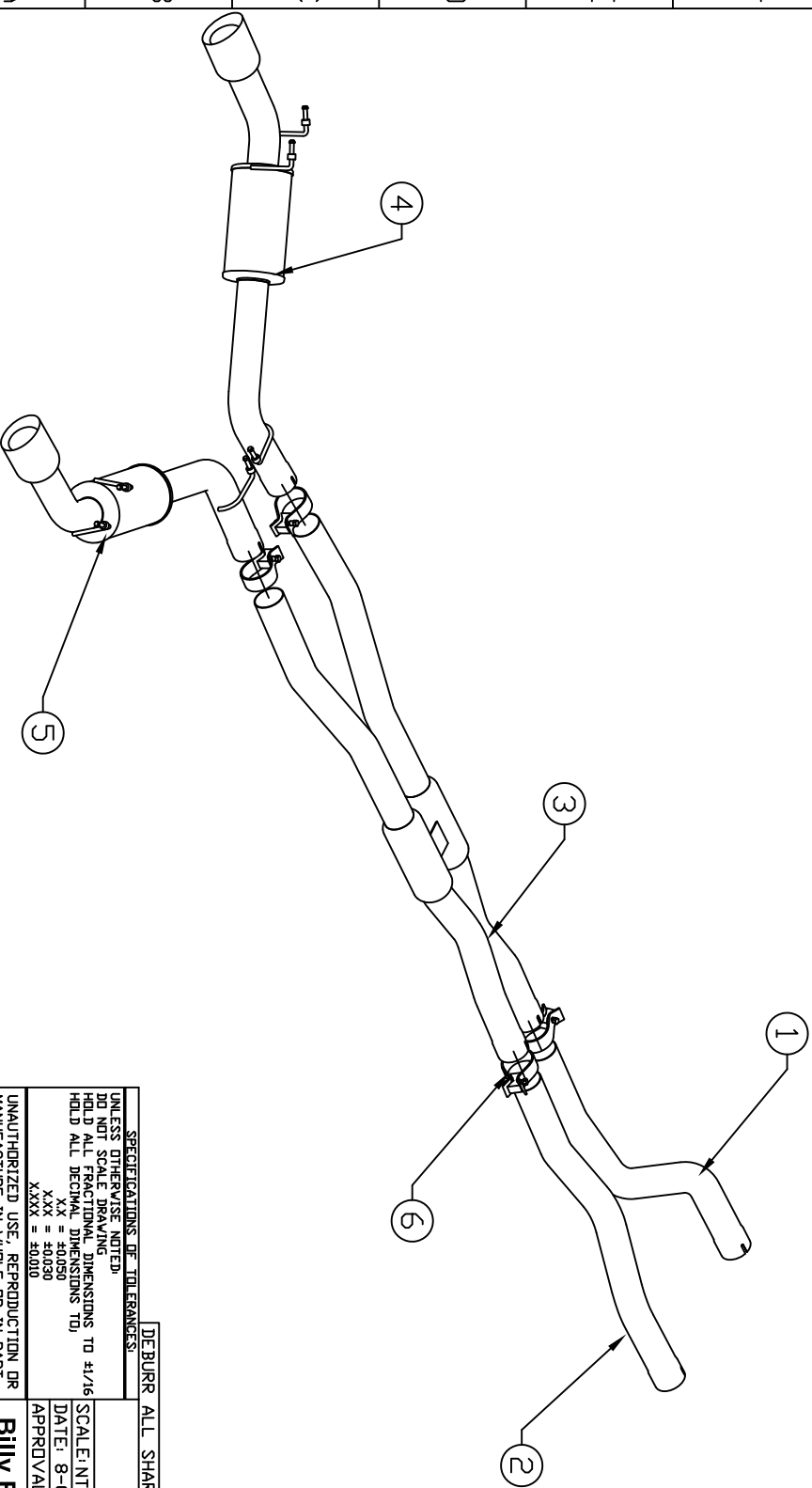


BILL OF MATERIALS

ITEM	QTY.	U/M	PACKING	ISP	INT	DESCRIPTION
1	1	EA				DRIVER SIDE FRONT PIPE
2	1	EA				PASSENGER SIDE FRONT PIPE
3	1	EA				X-PIPE
4	1	EA				DRIVER SIDE MUFFLER
5	1	EA				PASSENGER SIDE MUFFLER
6	4	EA				CLAMP - 3" BAND
7						
8						



SPECIFICATIONS OF TOLERANCES:

UNLESS OTHERWISE NOTED:
 DO NOT SCALE DRAWING
 HOLD ALL FRACTIONAL DIMENSIONS TO $\pm 1/16$
 HOLD ALL DECIMAL DIMENSIONS TO:
 .XX = ± 0.050
 .XXX = ± 0.030
 .XXXX = ± 0.010

DEBURR ALL SHARP EDGES | REV. | DATE | EC.N. NO. | BY

CAMARD V8/SS SPORT 2014-

SCALE: INCH

DATE: 8-03-16

APPROVAL DATE: | APPROVED BY: | DWN: | SHT: 1 OF 1

Billy Boat Performance Exhaust

UNITS(S) | JOB NUMBER: | DRAWING NO. FBDD0706

A B C D E F G H 10 9 8 7 6 5 4 3 2 1